

# **The ECU+ Fuel/Timing/Datalogging Piggyback Engine Computer**

**Version 2.15 Upgrade Guide**  
09/22/09

## Table of Contents

1 Introduction.....	3
2 What's New.....	3
3 Hardware Requirements.....	3
4 Jumper Changes.....	4
4.1 Removing and Opening the Silver Box.....	4
4.2 Jumper Positions.....	5
4.3 JP8, the OBD Disconnect Jumper.....	5
4.4 JP3, the OBD Mode Jumpers.....	6
4.5 Reinstalling the Silver Box.....	6
5 Saving Your Configuration Settings (Required).....	7
6 Upgrading the ECU+ Win Software.....	7
7 Upgrading the AVR Firmware.....	8
8 Upgrading the DSP Firmware.....	9
9 Restoring Your Configuration Settings (Required).....	11
10 Finishing Up.....	11
11 Problems.....	12
12 The Last Word.....	12

# 1 Introduction

This upgrade guide describes what's new in the ECU+ firmware and software, version 2.15. Version 2.15 is a major update to the ECU+ firmware and software with many new features. This guide is everything you need to know to update to the new firmware and software.

## 2 What's New

The ECU+ firmware and software version 2.15 is a major update to the ECU+. It includes much new functionality, including:

- Fuel and timing maps extended to 9000 RPM.
- Smoothing of graph values, configurable on a per-graph basis.
- Support for newer EcuFlash XML ROM files.
- Supports logging of two GM intake air temperature sensors.
- Optional conversion of one GM air temperature sensor to stock for use with the GM MAFs.
- XP-look styling so that buttons and other GUI elements have a native look and feel on Windows XP and newer operating systems.
- New higher-resolution icons throughout for Windows Vista.
- Custom logging – now log a variety of derived (“Hz/RPM”) and rarely-needed (clutch-in status) values with a user-defined mathematical formula.
- Custom MUT-II logging. Define your own named MUT-II commands along with a user-defined mathematical formula to compute the MUT-II value from the byte read from the stock ECU.
- NLTS rev limit raised.
- -RomEdit version of ECU+ Win can now highlight traced map cells. Select a region of a captured .ecd file, and the software will highlight just the stock ECU map cells that are used in that region.
- Added support for Auto Meter gauge wideband O2 sensor.
- New command-line option that will automatically start a capture session when ECU+ Win is started.
- Graphical update of AVR and DSP firmware. The DSP firmware update is a wizard that saves and restores your settings before and after the update, making it simple.
- DSP firmware update supports update from all prior silver box firmware versions.
- New anti-stall feature to help with VTA blow-off setups.
- 2G DSM EDM transmission ratios now supported. Allow 5<sup>th</sup> gear pulls in the dyno analysis.
- Configurable display of TPS as a percentage rather than a voltage.
- Improved tooltips and graphing throughout – graphs now put grid lines in more sensible spots under certain zoom conditions, and a zero-line is shown if needed. Mouse-wheel support added

to graphs. Fixed graph tooltip flicker on Vista.

- Fail-safe rev limit.
- Internal gear calculation, with defaults for all supported vehicles.
- Boost control. Controllable on an RPM and gear basis and includes overboost cut.
- Gear-based tweaks for fuel and timing. Run different boost, timing and fuel values for each gear.
- Massively-improved drag race analysis. Shows run statistics for multiple runs in parallel, including shift times and trap speeds. Also includes drag racing tips.
- Added overlay management dialog box – add, remove, re-order and shift overlays much more simply than before.
- Added support for the PLX EGT adapter.
- Added sidebar help to all configuration screens.
- Many internal changes and bug fixes to the ECU+ Head Unit Settings dialogs. Added grid Copy and Paste functionality.

In addition to the new features, Idle MAS smoothing and Decel MAS smoothing were both removed, as they've been superceded by the new anti-stall feature. These features are still supported for older firmware versions. Additionally, Palm support continues to be MIA, with poor prospects for revival (based on customer feedback).

A complete list of new features and links to some of the discussions of these features is available in the ECU+ forums, at

<http://www.ecuplus.com/forums/viewtopic.php?f=7&t=875>

### 3 Hardware Requirements

The new version 2.15 firmware/software release requires the “silver box” ECU+ hardware, and will not work on the “black box” units.

One set of changes was made during silver box production that introduced new hardware features, and version 2.10 and up of the ECU+ firmware/software release begins to take advantage of these new features. As such, there are two “types” of ECU+ silver boxes, and the type of box is determined by the unit's serial number, which can be found on the *Miscellaneous* page of the ECU+ Win software's head unit settings dialog.

- Serial number 2000 through 2099. These are the original design of the silver box hardware.
- Serial number 2100 and higher. These are the most recent design of the silver box hardware.

The original design (S/Ns 2000-2099) is missing a few hardware features that are available in the later hardware. During 2007 and 2008 hardware upgrades were offered for a nominal fee that would bring these older devices up to the specs of the most recent devices. If you have an upgraded original design silver box, your unit includes all of the new functionality. Otherwise, you are out of luck as the hardware upgrades are no longer offered.

With the release of version 2.15 of the ECU+ software and firmware, non-upgraded original design ECU+'s will be missing the following functionality:

- The no-lift-to-shift feature. This feature uses the clutch switch input, which isn't available on the original design of the ECU+ silver box.

- Gear calculation, which uses the clutch switch input to determine “no gear” times, may give bogus gear values when the clutch is in.
- The new drag analysis feature may not be able to calculate accurate shift times, as this also uses the clutch switch input if available.
- Fuel, timing and boost maps won't be switchable via an external switch. This external switch input isn't available on the original design of the ECU+ silver box. Map switching is still possible without this input, but the ECU+ won't be able to use an external stimulus to switch maps.

## **4 Jumper Changes**

Inside the silver box ECU+ are several “jumpers” (shorting blocks, which short two circuit board pins together) that may need to be modified to get the ECU+ silver box to work with the version 2.10 and higher firmware and hardware. Most cars won't need to alter the jumper settings, so read this section completely before removing the ECU+ silver box from your car.

### ***4.1 Removing and Opening the Silver Box***

To inspect or alter the jumper settings of the ECU+ silver box circuit board, simply:

1. Remove the silver box from your car. Both the black (low current) and gray (high current) connectors can be released from the silver box to aide removal. For the black connector, “wiggle” it out underneath the “arms” that extend out of the silver box. (Some silver box ECU+'s don't have arms.) For the gray connector, squeeze the tab on the top of the connector and wiggle the connector free.
2. Remove the four end panel screws on each end of the box and remove both end panels.
3. Slide out the ECU+ circuit board from the box. Be very careful with this board, as static electricity can destroy the board.

## 4.2 Jumper Positions

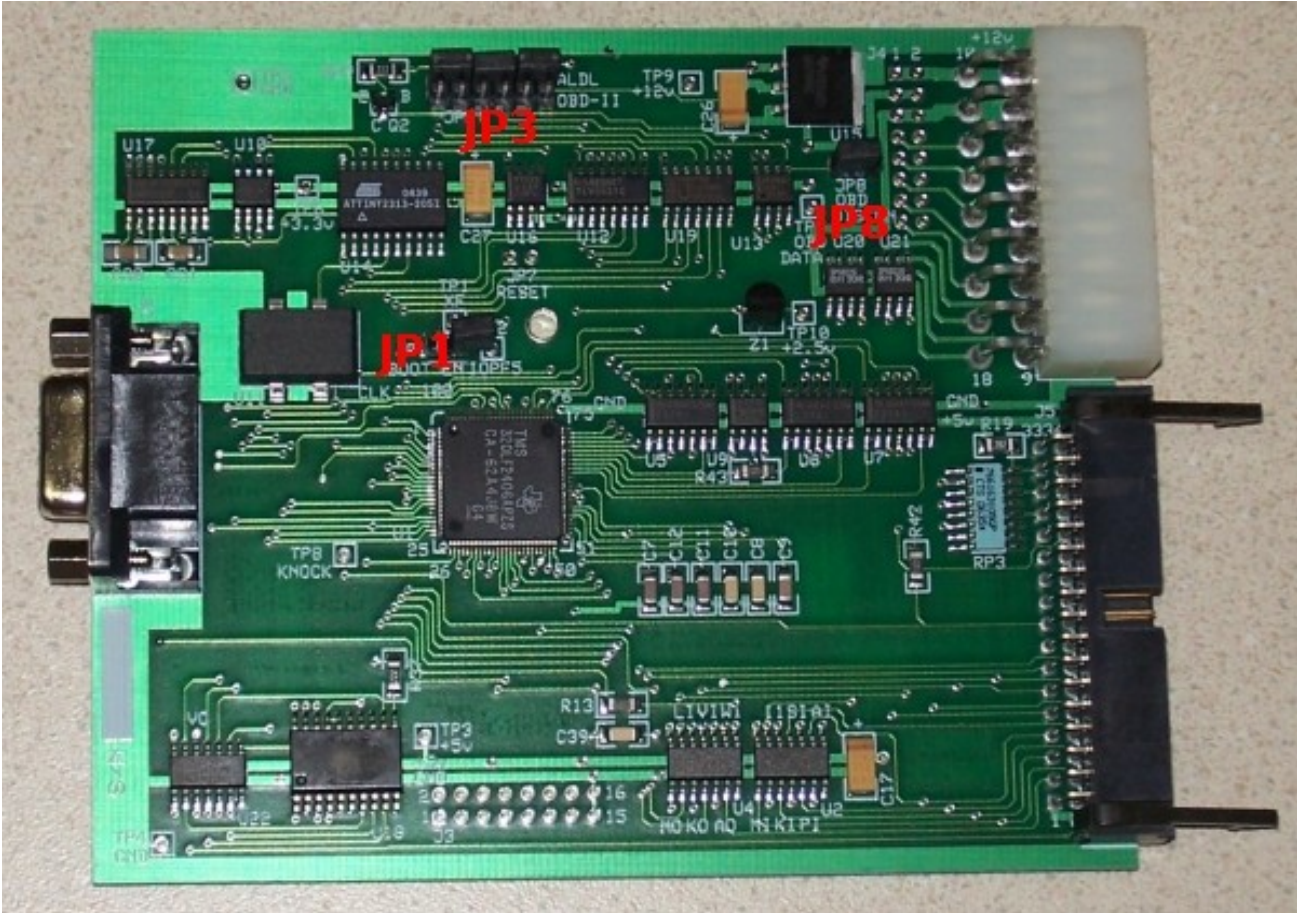


Illustration 1 - Jumper locations

Illustration 1 Shows an ECU+ circuit board, and the locations of JP3 and JP8. These are the two jumpers that may need to be modified.

## 4.3 JP8, the OBD Disconnect Jumper

Jumper JP8 (top right of the board) is the so-called *OBD-II Disconnect* jumper. On some of the ECU+ circuit boards with S/Ns of 2000-2099, this jumper is not shorted (connected) at the factory. To correct this, simply jumper the two pins of JP8 together with the jumper plug that's “hanging” off of one of the JP8 pins. A shorted JP8 is shown in Illustration 2 below.



Illustration 2 - Connecting JP8

This jumper was disconnected on ECU+'s that shipped with version 2.03 or earlier of the ECU+

firmware and software. If you have a ECU+ with a serial number of 2100 or higher, **or** you have an ECU+ in which the OBD-II functionality (2G DSMs and the EVOs) works, this jumper is set properly and does not need to be changed.

#### **4.4 JP3, the OBD Mode Jumpers**

Jumper JP3 (top center of the board) is the so-called OBD Mode jumper. This set of three jumpers swaps in the hardware necessary to allow the ECU+ 's OBD port to talk to your stock ECU for OBD-II screens and MUT-II datalogging. Two jumper configurations are supported:

1. *ALDL* mode, used for the 1G DSMs.
2. *OBD-II* mode, used for the 2G DSMs and the EVOs.

All ECU+'s are shipped from the factory with the jumpers in the *OBD-II* mode position. Before version 2.10 of the ECU+ firmware and software, the ECU+ didn't support the 1G DSM mode of operation, so *OBD-II* mode was always configured at the factory. Now that the ECU+ does support the 1G DSM mode of operation, these jumpers must be changed for the 1G DSM owners.

If you have a 2G DSM or EVO stock ECU, no changes to these jumpers need to be made. If your stock ECU is from a 1G DSM, you'll need to alter the JP3 jumper configuration to use *ALDL* mode. The figures below illustrate the jumper configuration for the two modes.



*Illustration 3 - JP3 jumpers in ALDL mode (1G DSMs)*



*Illustration 4 - JP3 jumpers in OBD-II mode (2G DSMs and the EVOs)*

#### **4.5 Reinstalling the Silver Box**

After verifying or altering the jumper settings, simply reverse the procedure outlined in the section Removing and Opening the Silver Box on page 5 to reinstall the ECU+ in your car.

## 5 Installing the New ECU+ Software

To upgrade your ECU+ Windows software to version 2.15 from any prior version, simply run the Setup.exe file supplied and follow the prompts. The new GUI installer will guide you through the installation. The new ECU+ software will be installed to the same directory as your existing ECU+ installation.

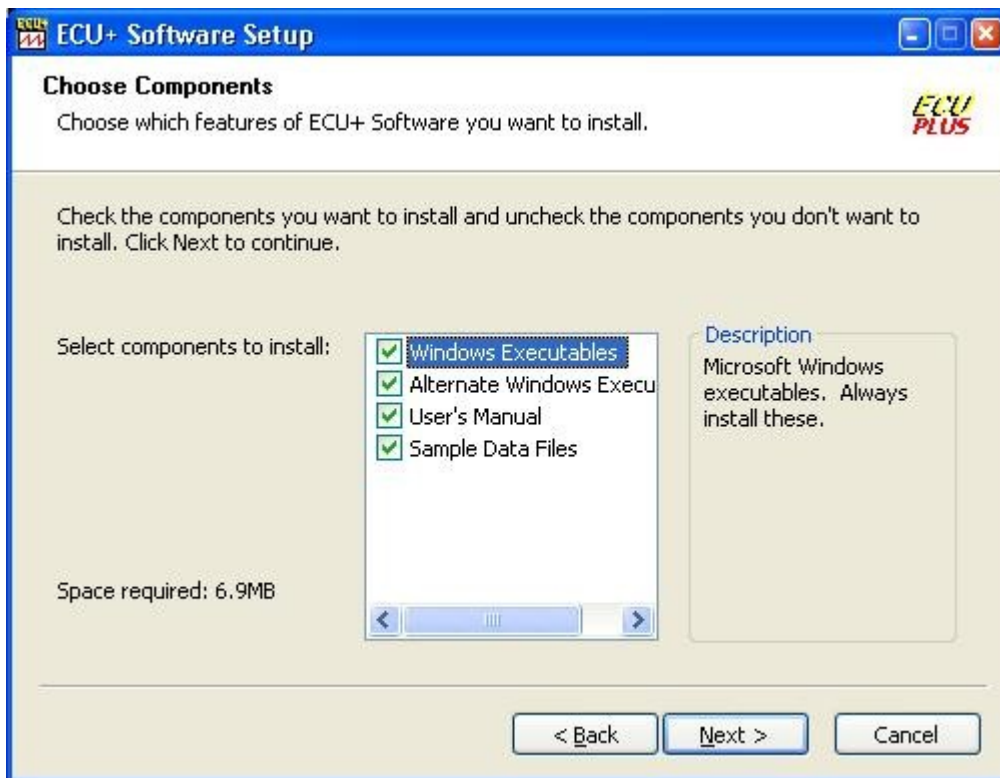


Illustration 5 - The first installation screen

If you have an Evolution VIII or IX, and plan to use the ECU+ alongside the EcuFlash tool, be sure to install the *Alternate Windows Executables*. All other customers can skip this step.

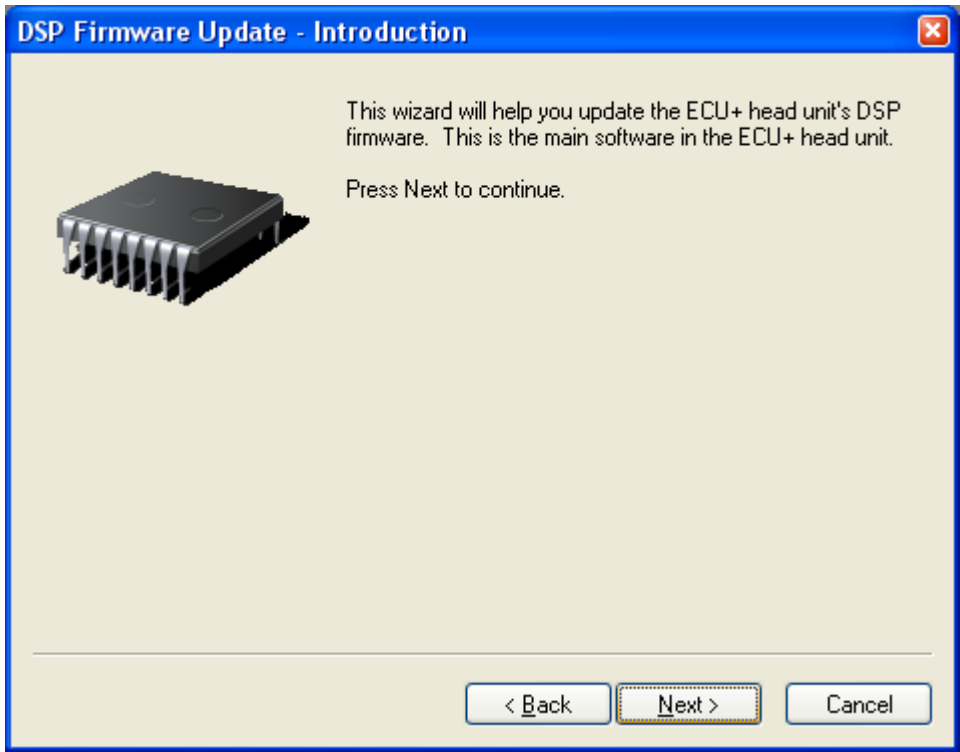
## 6 Upgrading the DSP Firmware

The ECU+ includes two microprocessors inside the silver box. The first microprocessor is the so-called “DSP” microprocessor. This microprocessor runs the engine and does the majority of the datalogging. The ECU+ software installation includes updated versions of this firmware that must be installed.

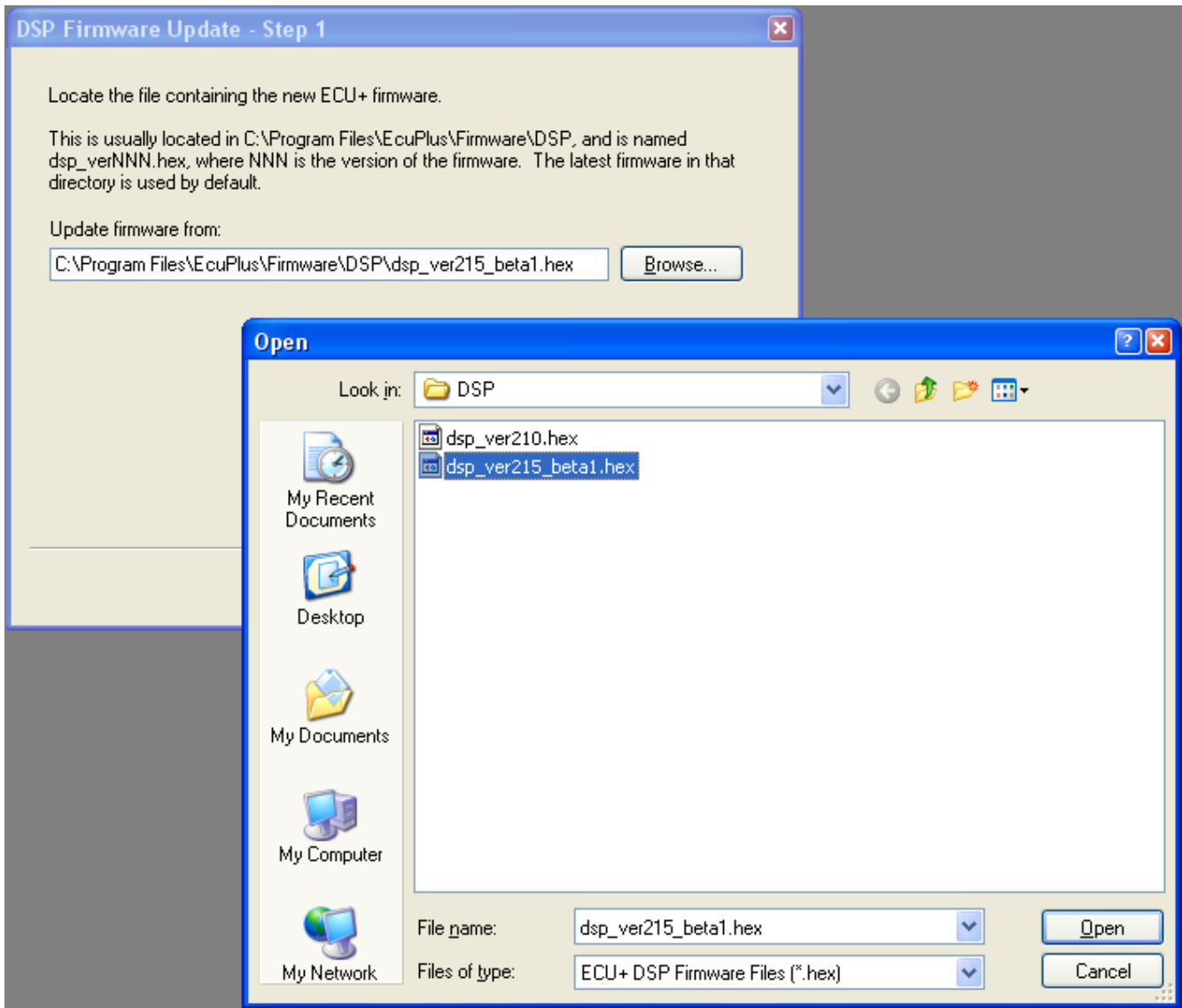
To upgrade the DSP firmware, execute the following steps:

1. Connect your laptop to your ECU+ silver box.
2. Turn on the ignition, but don't start the car.
3. Run the new ECU+ Win software by double-clicking its icon on your Windows desktop.
4. Use the Settings->Update Firmware->DSP Firmware menu item to start the graphical DSP firmware update wizard. This wizard will save your current head unit settings to disk, upgrade your firmware, and restore your settings. In most cases, this process is as simple as pressing Next a few times. Always upgrade to the latest DSP firmware (this is the wizard's default), as downgrading is not supported.

The firmware upgrade should complete without error. Some sample screenshots are shown below.



*Illustration 6 - Starting the DSP firmware update process*



*Illustration 7: Optionally selecting the firmware file*

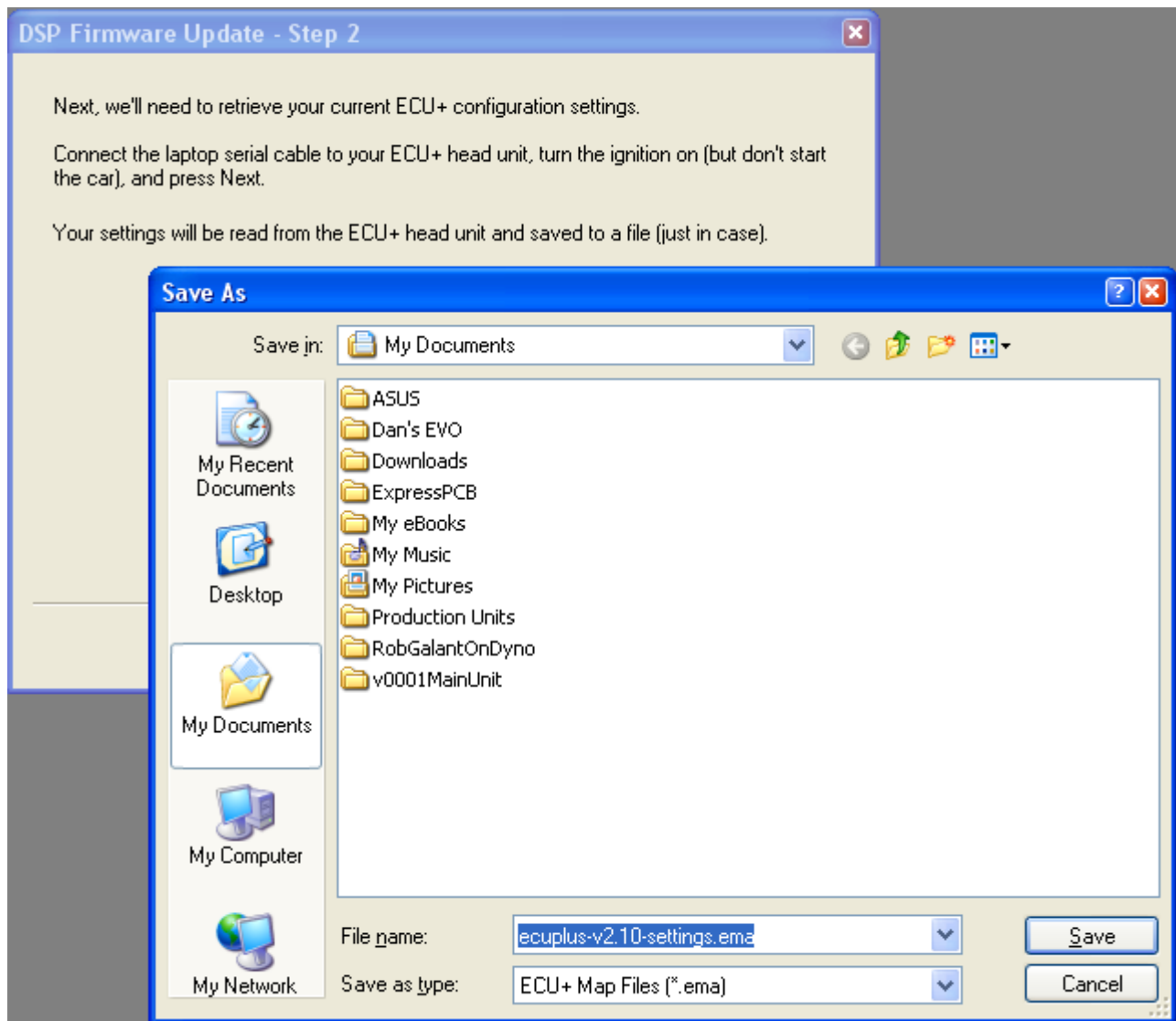
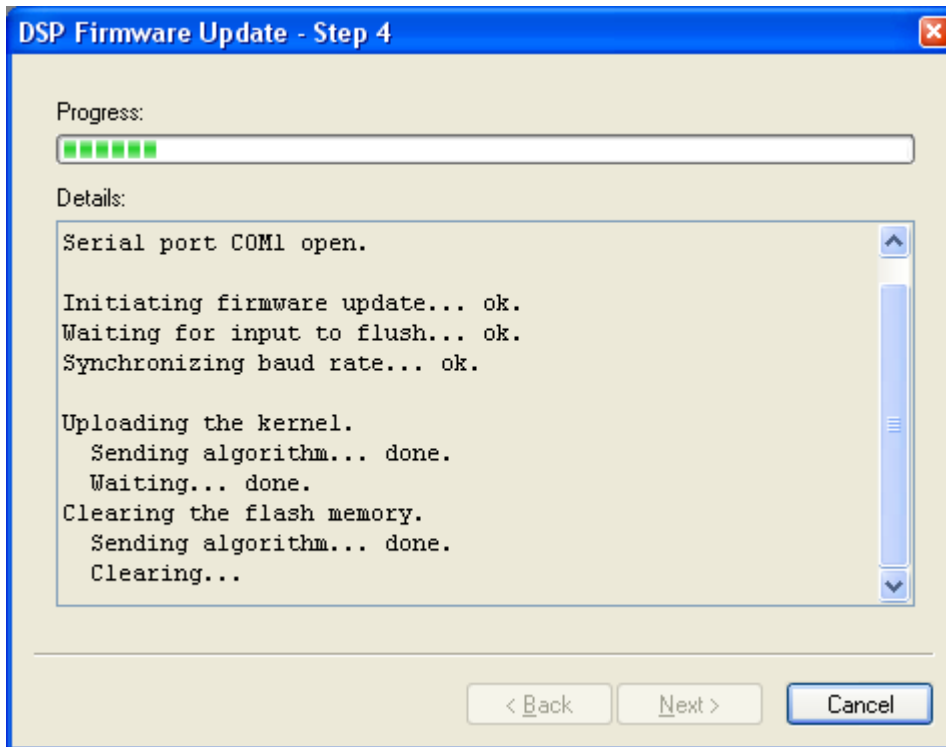


Illustration 8: Saving your current settings to a file



*Illustration 9: Doing the upgrade*

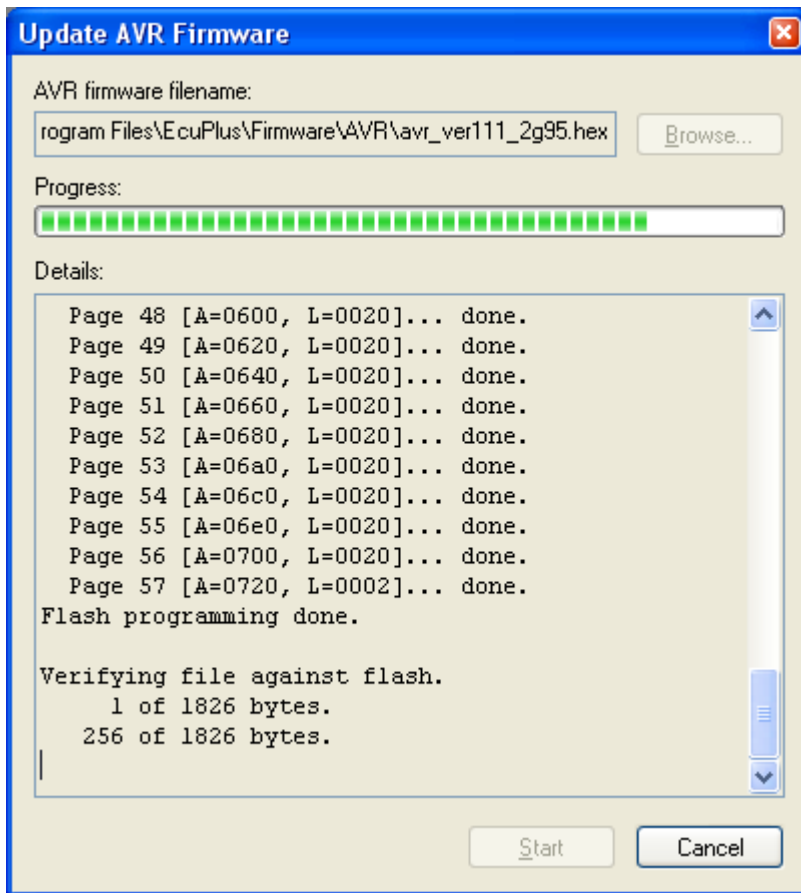
## 7 Upgrading the AVR Firmware

The second microprocessor inside the silver box is the so-called “AVR” microprocessor. This microprocessor talks to the OBD port on your stock ECU. The ECU+ software installation also includes updated versions of this firmware that should be installed, especially if you have a 1995-1996 DSM.

To upgrade the AVR firmware, execute the following steps:

1. Connect your laptop to your ECU+ silver box.
2. Turn on the ignition, but don't start the car.
5. Run the new ECU+ Win software by double-clicking its icon on your Windows desktop.
6. Use the Settings->Update Firmware->AVR Firmware menu item to start the graphical AVR firmware update dialog box.
7. Use the Browse button to select an AVR firmware version appropriate for your car.
8. Press the Start button to begin the upgrade.

The firmware upgrade should complete without error. A sample screen is shown below.



*Illustration 10 - A sample run of the AVR firmware update*

## 8 Wiring Changes

To take advantage of the new functionality in the ECU+ version 2.10 and higher firmware, some changes to the ECU+ wiring may be required depending on your car type and ECU+ head unit serial number. These wiring changes are all described in the ECU+ manual; this section points out what changes are necessary for what functionality.

### 8.1 No Lift to Shift – The Clutch Switch Wire

To use the ECU+'s no-lift-to-shift (NLTS) function, a connection between the “top clutch switch” and the ECU+ head unit is necessary. The clutch switch allows the ECU+ head unit to know when the clutch is depressed, and thus when to activate NLTS.

As described in the section Hardware Requirements on page 4, this feature requires that ECU+ head units with serial numbers of 2000-2099 be updated to match the hardware available in later units. Assuming you have an updated or later version of the head unit, there are two cases:

1. 1990-1999 DSMs – the clutch switch wire must be wired up manually, independent of whether or not you own a PnP ECU+.
2. 2003-2006 EVOs – the clutch switch wire is already wired for you on PnP ECU+'s, or must be wired manually on wire-it-yourself ECU+'s.

The clutch switch wiring is described in section 5.5.8 of the ECU+ user's manual.

## 8.2 The External Switch

As with the clutch switch input, this input is not available on ECU+'s with serial number 2000-2099 unless the hardware has been updated to match the hardware on later models of the silver box.

To external switch input is a 5 volt input that allows the ECU+ firmware to switch between two sets of fuel and timing maps based on an external input. This input can come from a physical switch or the output of a controller box (for nitrous, etc.). This always needs to be hand-wired on all ECU+'s.

The external switch wiring is described in section 5.5.9 of the ECU+ user's manual.

## 8.3 The Simulated Front O2 Output

The simulated front O2 output allows the ECU+ to generate a front O2 signal based upon the air/fuel ratio calculated by an attached wideband O2 sensor kit. This must be hand-wired if you want to use this feature.

The simulated front O2 wiring is described in section 5.5.7 of the ECU+ user's manual.

## 8.4 The 1G DSM OBD Connections

New in ECU+ firmware version 2.10 is support for the OBD connections on first generation (1990-1994) DSMs. Two wires must be newly-connected on these cars, as described in section 5.4.1 of the ECU+ user's manual. Note that one of the connections is on the "high current" connector, which previously only contained power connections.

## 8.5 Boost Control Connections

New in ECU+ firmware version 2.15 is support for boost control using a GM boost control solenoid. Two new wires must be connected to the solenoid as described in section 5.5.11 of the ECU+ user's manual.

## 9 Finishing Up

At this point, your hardware jumper settings are good-to-go, you have new firmware and software installed, and you're ready to try out some of the new features in the ECU+. To see what kind of new things are configurable, have a look at the main menu items *Settings->ECU+ Win* and *Settings->ECU+ Head Unit*. Also, *please* at least skim the ECU+ user's manual (now over 120 pages) for things that are new. If you choose to use the no-lift-to-shift feature, map set switching with an external switch or boost control, there is a bit of additional wiring that needs to be done. Most of the other features are software/firmware-only, and just need to be configured.

## 10 Problems

If you have any problems with the upgrade to the ECU+ firmware or software, or if you find any bugs in the software, send an e-mail to [support@ecuplus.com](mailto:support@ecuplus.com).

## 11 The Last Word

The ECU+ firmware and software version 2.15 involved *two years* of hard work. Thanks to all of the folks who suggested features and enhancements.

If you like the ECU+, and want to encourage future firmware and software upgrades, there are two

things you can do:

- Post on the forums at [forums.ecuplus.com](http://forums.ecuplus.com). Help others with their problems, and post good reviews of the product if you can. Upgrades like this for existing customers are free and your feedback is one way you can “pay” for new features.
- Tell your friends about the ECU+. The ECU+ is a one-man, low budget operation without a big advertising budget. Word of mouth is the best advertisement of all!

Tom Collins

[tlcoll1@edgebbs.com](mailto:tlcoll1@edgebbs.com)